



# Steam & Power solutions

*...Concept to commissioning*



**BAJAJ POWER**  
EQUIPMENTS PVT. LTD.

**About Us:** Bajaj Power Equipments Pvt. Ltd. (BPEPL) is an ISO 14000 (EMS) and ISO 18000 (OHSAS) certified, IBR approved engineering company located at MIDC Ahamadnagar. BPEPL is engaged in design, manufacture, supply, erection and commissioning high pressure multifuel boilers all over the world.

From a small manufacturing set up BPEPL have developed their work shop in to a STATE OF THE ART boiler manufacturing unit, comparable with the best in the country. Today, BPEPL with their design, engineering expertise, excellent manufacturing facilities, quality aspects and reliable commitments, transformed themselves into an excellent boiler manufacturing company.



**Quality:** The entire team is committed to meet the quality standards at all stages of a job. BPEPL believe in quality in every aspect life of their people. BPEPL has manufactured almost all the pressure parts for BHEL 270 MW power plant.

BPEPL have dedicated quality control set up to ensure quality of equipments manufactured by them. Due to reliability and prompt services, BPEPL is getting repeat orders. BPEPL has adopted SAP for maintaining the inventory and improving the quality and production.

BPEPL have also aquired by their actions reputation for their quality aspects and reliable commitment for on time delivery.

**Manufacturing facilities:** Bajaj power has manufacturing facilities with covered area of 1,50,000 sq. feet. The Workshop is well equipped with Membrane panel m/c, Membrane panel bending m/c, Orbit tube welding m/c, CNC tube bending m/c, SAW m/c, Radial drill m/c, Tube swaging m/c & other machines.

BPEPL has the capacity and capability to manufacture various equipments to meet the national and international standard including IBR, ASME, BS and other. Generally all bought out equipments would be sourced from the best in the country. Design, Drawings are made as per the internationally accepted software such as Stadpro 3, Auto Cad, Solid Edge etc. . .



**Membrane Panels:** In BPEPL we have automatic Membrane panel manufacturing machine with 04 numbers of torches. Before actual membrane panel manufacturing the tubes are cleaned and polished by polishing m/c. The fins are calibrated to the accurate size in calibration m/c. Then the polished tubes and calibrated fins are fed to the membrane m/c.

BPEPL have introduced and revolutionized machine made membrane panels thus giving relief to the users of such membrane panel in large thermal power plants and other convention boilers. This machine gives excellent weld quality without developing stress.





**55 TPH, 45 Kg/cm<sup>2</sup>, 500°C, EFB fired Boiler**

**Product Range:** BPEPL is capable to Design and manufacture Biomass & coal fired single/bi-drum boilers of capacities up to 200TPH, steam pressure up to 125 Kg/cm<sup>2</sup> and temperature up to 540°C.

Incineration boilers with Bagasse, Biomass and Coal as support fuel for Distilleries

Co-Generation plants and Power plants up to 50 MW

Boilers with firing equipments like Travelling grate, Dumping Grate, Pulsating Grate and Fluidized Bed Combustor (AFBC)

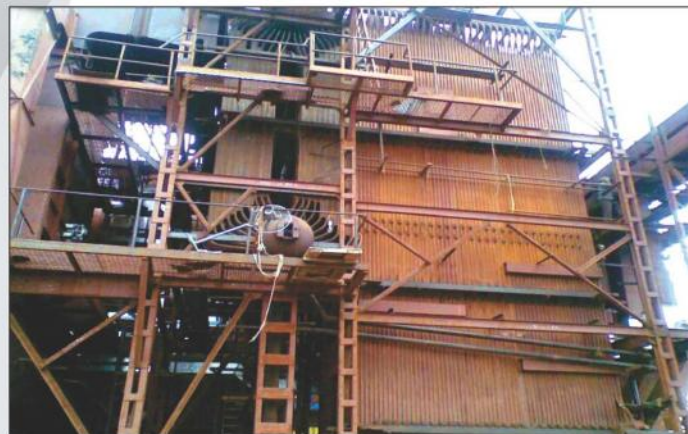


**60 TPH, 45 Kg/cm<sup>2</sup>, 500°C, Bagasse fired Boiler in Maharashtra**

**Experience:** BPEPL has manufactured wide range of various Boilers. With the support of our technical collaborator, we have been technically qualified for a 110 TPH, 87 kg/cm<sup>2</sup>, 535°C Bagasse fired travelling grate boiler for co-gen project in a Co-operative sugar plant.

**Business Areas:** Various process plants like sugar, Distillery, paper, chemical, Steel, cement and many more.

BPEPL provides EPC solutions to Co-Gen power plants and independent power plants.



**50 TPH, 67 Kg/cm<sup>2</sup>, 500°C Bagasse fired Boiler in Uganda**

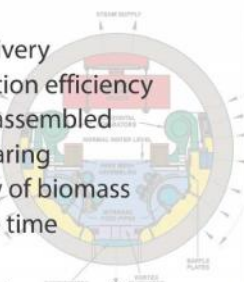
**Technology:** Always willing & in readiness to introduce new and proven technology as per market needs. Presently BPEPL has technical collaboration with a reputed boiler manufacturing company for Incineration boilers and biomass-coal fired boilers up to 200TPH, 125 Kg/cm<sup>2</sup>, 540°C.

BPEPL boilers are capable to handle Coal, various Biomass like Bagasse, Rice husk, Soya husk, mustard husk, cotton stalk, sunflower husk, ground nut shell, wood chips, and many more.....EFB, Palm Oil waste, Poultry litter etc...



### Highlights of BPEPL Boilers:

- Reliable quality commitments and Timely delivery
- Assured -proven quality & Improved Combustion efficiency
- Critical equipments like traveling grate shop assembled
- TG life increase by self lubricated graphite bearing
- Tall furnace gives flexibility in different variety of biomass
- Ensures complete combustion with residence time
- Low fly ashes carry over
- Specially designed drum internals to control steam quality



**Quality work for BHEL**





**Vision:** In the next 5 years BPEPL to be the leader from India in the world boiler market. In BPEPL, we believe in our quality, production & commitments.



**BAJAJ POWER  
EQUIPMENTS PVT. LTD.**

**Pune Office:**

Off No. 107, 1st floor, 'B' Wing,  
Speciality Business Centre, Balewadi,  
Tal- Haveli, Dist. Pune 411045 (M.S.), India.  
Email: [marketing.pune@bajajpower.com](mailto:marketing.pune@bajajpower.com)

**Works:**

Survey No. 227/3, Nimblak By-pass,  
MIDC, Ahmednagar- 414 111 (M.S.), India  
Tel/Fax.: (0241) 2030 698, 2030 632, 2030 633  
Email: [admin@bajajpower.com](mailto:admin@bajajpower.com)

[www.bajajpower.com](http://www.bajajpower.com)